

Triplexer

TPLX-E2485+

50Ω (1-2485 MHz)
(1 - 460, 610-1150, 1435-2485 MHz)



CASE STYLE: HR1843

The Big Deal

- Low insertion loss
- 50Ω Impedance
- Miniature shielded package

Product Overview

TPLX-E2485+ is a high performance 50Ω triplexer with the lowpass channel-1 at 1-460 MHz, bandpass channel-2 at 610-1150 MHz and highpass channel-3 at 1435-2485 MHz. The channels are well isolated to minimize inter-channel interference and have minimal insertion loss through their respective bands. The triplexer is built in a shielded package, this triplexer finds its application in satellite communications.

Key Features

Feature	Advantages
Low passband insertion loss, 0.9 dB typical at lowpass and Band pass channel, 0.8 dB typical at the High pass channel	Very low insertion loss ensures less signal loss through all the channels.
Good co-channel rejection	Rejection of 20-50 dB ensures sufficient isolation between the channels
Miniature shielded package	Triplexer is designed into a surface mount package

Notes

- A. Performance and quality attributes and conditions not expressly stated in this specification document are intended to be excluded and do not form a part of this specification document.
B. Electrical specifications and performance data contained in this specification document are based on Mini-Circuit's applicable established test performance criteria and measurement instructions.
C. The parts covered by this specification document are subject to Mini-Circuits standard limited warranty and terms and conditions (collectively, "Standard Terms"); Purchasers of this part are entitled to the rights and benefits contained therein. For a full statement of the Standard Terms and the exclusive rights and remedies thereunder, please visit Mini-Circuits' website at www.minicircuits.com/MCLStore/terms.jsp



Triplexer

TPLX-E2485+

50Ω (1 to 2485 MHz)
(1-460, 610-1150, 1435-2485 MHz)



CASE STYLE: HR1843

Maximum Ratings

Operating Temperature	-40°C to 85°C
Storage Temperature	-55°C to 100°C
RF Power Input	2 W

Permanent damage may occur if any of these limits are exceeded.

Pin Connections

COMMON PORT	16
CHANNEL-1	10
CHANNEL-2	6
CHANNEL-3	20
GROUND	1,2,3,4,5,7,8,9,11,12,13,14,15,17,18,19

Features

- Low insertion loss
- 50Ω Impedance
- Miniature shielded package

Applications

- Military
- Satellite communication

+RoHS Compliant

The +Suffix identifies RoHS Compliance. See our web site for RoHS Compliance methodologies and qualifications

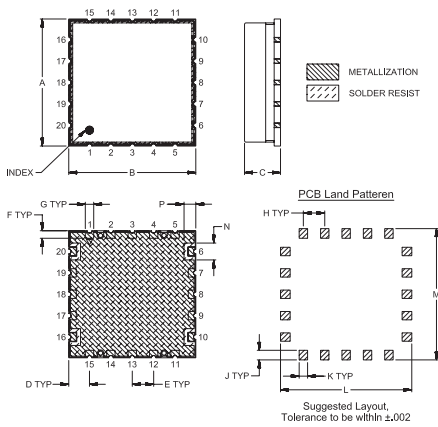
Electrical Specifications at 25°C

Parameter	Port	Frequency (MHz)	Min.	Typ.	Max.	Unit	
Pass Band	Insertion Loss	Low Pass, Channel - 1	1-460	-	0.9	1.7	dB
		Band Pass, Channel - 2	610-1150	-	0.9	1.8	
		High Pass, Channel - 3	1435-2485	-	0.8	1.7	
	Return Loss	Low Pass, Channel - 1	1-460	10	16	-	dB
		Band Pass, Channel - 2	610-1150	9	13	-	
		High Pass, Channel - 3	1435-2485	8	11	-	
Stop Band Isolation	Common	1-460	10	16	-	dB	
		610-1150	9	13	-		
		1435-2485	8	11	-		
	Low Pass, Channel - 1	610-1150	30	38	-	dB	
		1435-2485	25	26	-		
		Band Pass, Channel - 2	1-460	20	29		-
High Pass, Channel - 3	1-460	45	37	-	dB		
	610-1150	30	34	-			

Typical Performance Data at 25°C

FREQ. (MHz)	INSERTION LOSS (dB)				RETURN LOSS (dB)		
	Low Pass Channel -1	Band Pass Channel -2	High Pass Channel -3	Common	Low Pass Channel -1	Band Pass Channel -2	High Pass Channel -3
1.00	0.09	81.12	97.78	47.10	45.95	0.05	0.05
15.00	0.11	58.07	101.23	30.55	30.59	0.04	0.05
60.00	0.20	46.11	101.17	20.12	19.96	0.04	0.04
460.00	0.82	32.61	55.01	26.30	33.46	0.22	0.09
500.00	2.82	14.63	53.85	6.64	7.05	0.58	0.11
505.00	3.66	12.76	52.69	5.35	5.64	0.72	0.11
540.00	19.99	4.53	46.44	3.17	1.25	2.97	0.12
580.00	30.78	1.04	48.10	12.03	0.72	11.44	0.14
610.00	41.74	0.58	48.68	31.55	0.57	27.36	0.15
620.00	46.93	0.57	48.14	21.69	0.54	22.60	0.16
1100.00	57.84	0.72	42.77	20.77	0.12	19.07	0.82
1150.00	58.17	0.92	41.86	15.53	0.11	15.14	0.98
1250.00	54.55	1.39	18.41	31.72	0.11	24.62	1.24
1435.00	53.28	33.81	0.76	15.91	0.16	0.55	16.38
1560.00	40.20	38.41	0.51	19.78	7.52	0.41	19.13
1800.00	58.37	41.59	0.42	18.23	0.15	0.36	18.94
1950.00	38.86	45.94	0.51	14.19	0.92	0.41	14.44
2100.00	59.70	47.21	0.53	13.52	0.16	0.43	13.50
2350.00	50.97	43.23	0.43	15.86	0.16	0.48	15.05
2485.00	46.91	41.99	0.42	16.55	0.16	0.56	15.14

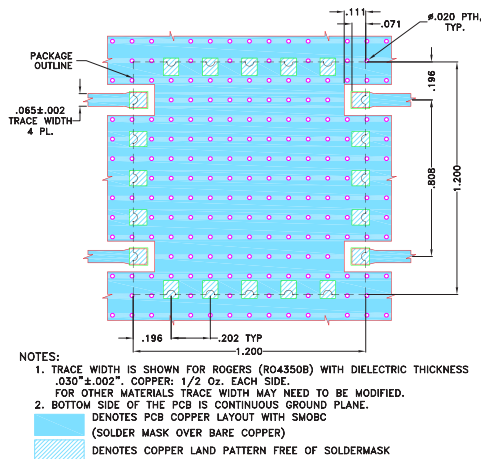
Outline Drawing



Outline Dimensions (inch/mm)

A	B	C	D	E	F	G	H
1.200	1.200	.370	.196	.202	.071	.079	.202
30.48	30.48	9.40	4.98	5.13	1.80	2.01	5.13
J	K	L	M	N	P	WT.GRAMS	
.091	.079	1.240	1.240	.159	.111	8	
2.31	2.01	31.50	31.50	4.04	2.82		

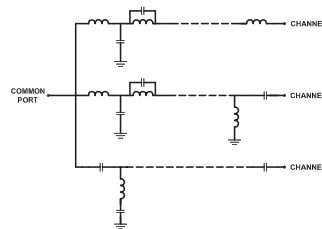
Demo Board MCL P/N: TB-767+ Suggested PCB Layout (PL-409)

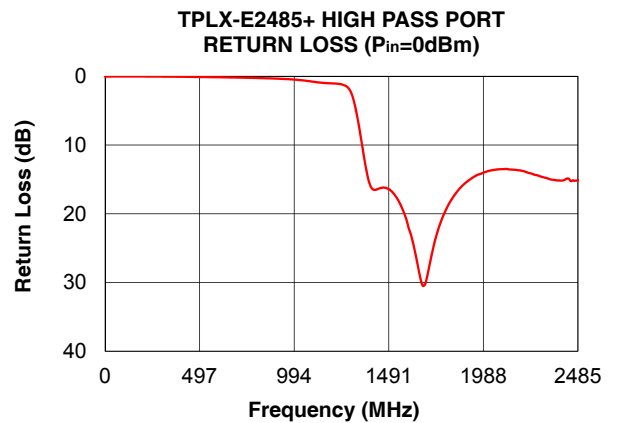
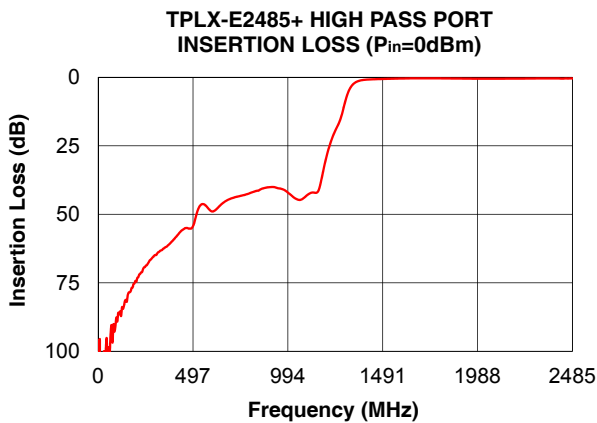
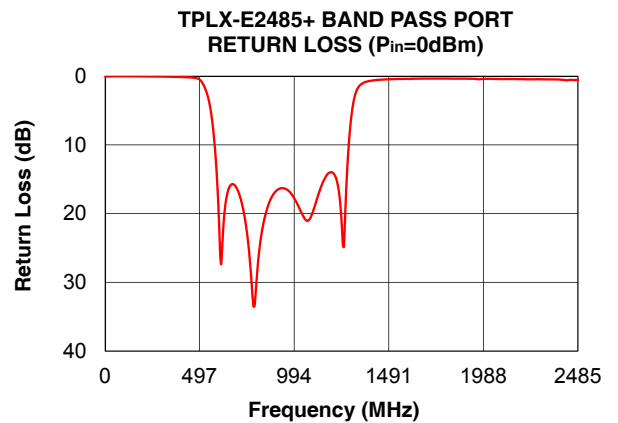
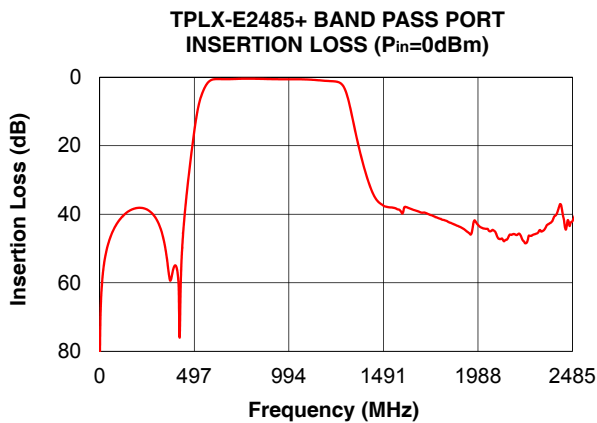
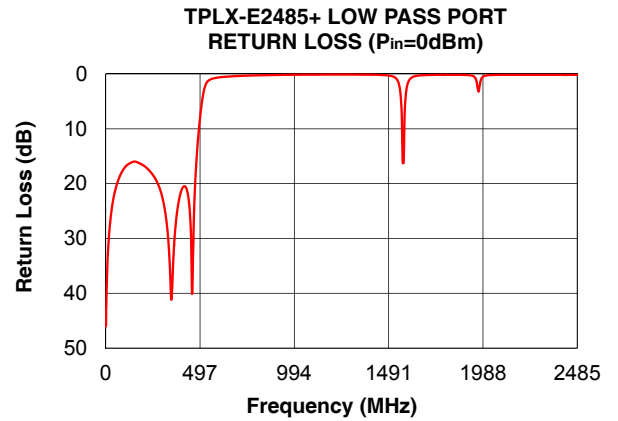
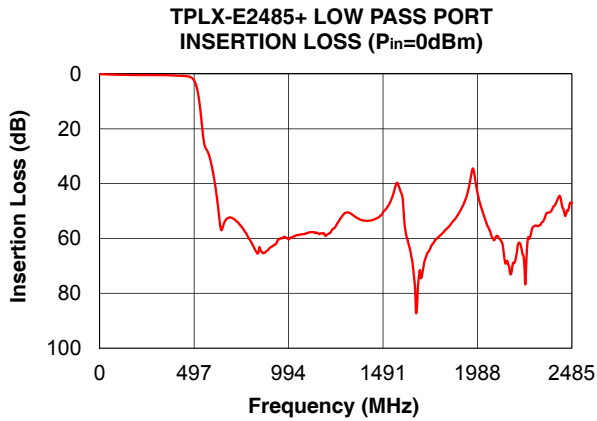


Notes

- A. Performance and quality attributes and conditions not expressly stated in this specification document are intended to be excluded and do not form a part of this specification document.
- B. Electrical specifications and performance data contained in this specification document are based on Mini-Circuits' applicable established test performance criteria and measurement instructions.
- C. The parts covered by this specification document are subject to Mini-Circuits' standard limited warranty and terms and conditions (collectively, "Standard Terms"); Purchasers of this part are entitled to the rights and benefits contained therein. For a full statement of the Standard Terms and the exclusive rights and remedies thereunder, please visit Mini-Circuits' website at www.minicircuits.com/MCLStore/terms.jsp

Functional Schematic

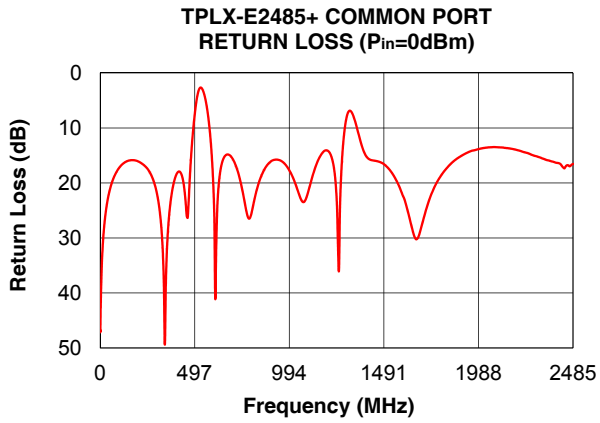




Notes

- A. Performance and quality attributes and conditions not expressly stated in this specification document are intended to be excluded and do not form a part of this specification document.
- B. Electrical specifications and performance data contained in this specification document are based on Mini-Circuit's applicable established test performance criteria and measurement instructions.
- C. The parts covered by this specification document are subject to Mini-Circuits standard limited warranty and terms and conditions (collectively, "Standard Terms"); Purchasers of this part are entitled to the rights and benefits contained therein. For a full statement of the Standard Terms and the exclusive rights and remedies thereunder, please visit Mini-Circuits' website at www.minicircuits.com/MCLStore/terms.jsp





Notes

- A. Performance and quality attributes and conditions not expressly stated in this specification document are intended to be excluded and do not form a part of this specification document.
- B. Electrical specifications and performance data contained in this specification document are based on Mini-Circuit's applicable established test performance criteria and measurement instructions.
- C. The parts covered by this specification document are subject to Mini-Circuits standard limited warranty and terms and conditions (collectively, "Standard Terms"); Purchasers of this part are entitled to the rights and benefits contained therein. For a full statement of the Standard Terms and the exclusive rights and remedies thereunder, please visit Mini-Circuits' website at www.minicircuits.com/MCLStore/terms.jsp

