

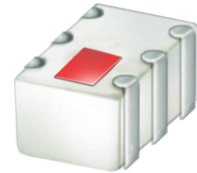
# Ceramic High Pass Filter

## HFCG-1760+

50Ω      1800 to 8000 MHz

### The Big Deal

- Small size 2.0 mm x 1.25 mm
- Good Power handling
- Ceramic construction



Generic photo used for illustration purposes only  
CASE STYLE: GE0805C-9

### Product Overview

HFCG-1760+ is a high pass filter with passband from 1800 MHz to 8000 MHz supporting a variety of applications. This model provides 2 dB typical insertion loss over a wide band due to strategically constructed layout. Housed in a tiny 0805 ceramic form factor with wraparound terminations, the filter is ideal for dense PCB layouts with minimal performance variation due to parasitics.

### Key Features

Feature	Advantages
Small size, 2.0 mm x 1.25 mm	Accommodates tight space requirements for dense PCB layouts.
Wrap around termination	Provides excellent solderability and easy visual inspection capability.
LTCC construction	Provides a rugged package that is well suited for tough environments including high humidity and high temperature extremes.
Ultra-wide pass band	This filter has a very wide passband from 1.8 GHz to 8 GHz.

#### Notes

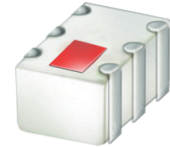
- A. Performance and quality attributes and conditions not expressly stated in this specification document are intended to be excluded and do not form a part of this specification document.  
B. Electrical specifications and performance data contained in this specification document are based on Mini-Circuit's applicable established test performance criteria and measurement instructions.  
C. The parts covered by this specification document are subject to Mini-Circuits standard limited warranty and terms and conditions (collectively, "Standard Terms"); Purchasers of this part are entitled to the rights and benefits contained therein. For a full statement of the Standard Terms and the exclusive rights and remedies thereunder, please visit Mini-Circuits' website at [www.minicircuits.com/MCLStore/terms.jsp](http://www.minicircuits.com/MCLStore/terms.jsp)



# Ceramic High Pass Filter

50Ω 1800 to 8000 MHz

## HFCG-1760+



Generic photo used for illustration purposes only  
CASE STYLE: GE0805C-9

**+RoHS Compliant**

The +Suffix identifies RoHS Compliance. See our web site for RoHS Compliance methodologies and qualifications

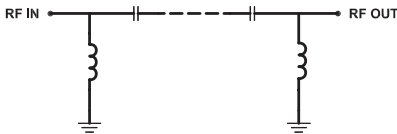
### Features

- Small size
- Temperature stable
- LTCC construction
- Good power handling, 3W

### Applications

- Transmitters / Receivers
- Test and measurements
- Military applications
- Telecommunications and broadband wireless systems

### Functional Schematic



### Electrical Specifications<sup>(1,2)</sup> at 25°C

Parameter		F#	Frequency (MHz)	Min.	Typ.	Max.	Unit
Stop Band	Rejection Loss	DC-F1	DC - 800	30	38	-	dB
		F1-F2	800 - 1200	28	36	-	dB
	Freq. Cut-Off	F3	1560	-	3.0	-	dB
	VSWR	DC-F2	DC - 1200	-	18	-	:1
Pass Band	Insertion Loss	F4-F5	1800 - 2100	-	2.0	-	dB
		F5-F6	2100 - 5200	-	1.0	1.6	dB
		F6-F7	5200 - 8000	-	2.0	-	dB
	VSWR	F4-F7	1800 - 8000	-	1.7	-	:1

1 This component isn't intended to act as a DC block. Please consult with Mini-Circuits for further details  
2 Measured on Mini-Circuits Characterization Test Board TB-1104+

### Maximum Ratings

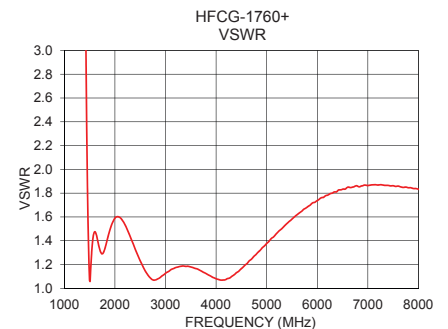
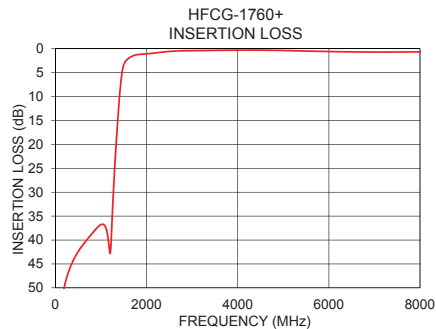
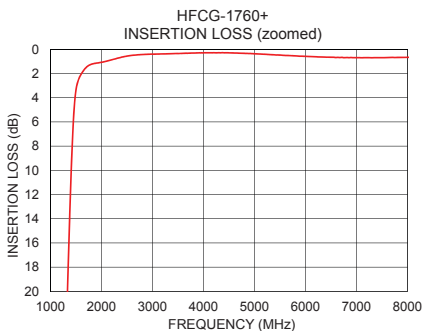
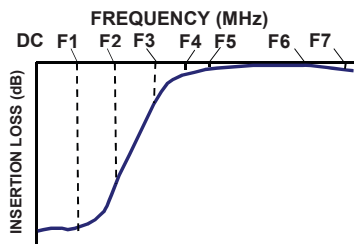
Operating Temperature	-55°C to 100°C
Storage Temperature	-55°C to 100°C
RF Power Input*	3 W

\*Passband rating, derate linearly to 1.5W at 100°C ambient  
Permanent damage may occur if any of these limits are exceeded.

### Typical Performance Data at 25°C

Frequency (MHz)	Insertion Loss (dB)	VSWR (:1)
10	63.72	434.30
100	55.43	157.93
500	42.40	64.35
600	41.06	56.04
800	38.70	45.72
1200	42.83	22.00
1270	30.26	16.26
1330	20.31	10.82
1360	15.99	8.01
1510	3.09	1.06
1560	2.39	1.40
1760	1.31	1.29
1800	1.24	1.33
2000	1.07	1.59
2100	0.98	1.60
2500	0.56	1.23
5200	0.41	1.46
6000	0.58	1.74
7000	0.69	1.86
8000	0.67	1.83

### Typical Frequency Response



### Notes

- Performance and quality attributes and conditions not expressly stated in this specification document are intended to be excluded and do not form a part of this specification document.
- Electrical specifications and performance data contained in this specification document are based on Mini-Circuit's applicable established test performance criteria and measurement instructions.
- The parts covered by this specification document are subject to Mini-Circuits standard limited warranty and terms and conditions (collectively, "Standard Terms"); Purchasers of this part are entitled to the rights and benefits contained therein. For a full statement of the Standard Terms and the exclusive rights and remedies thereunder, please visit Mini-Circuits' website at [www.minicircuits.com/MCLStore/terms.jsp](http://www.minicircuits.com/MCLStore/terms.jsp)



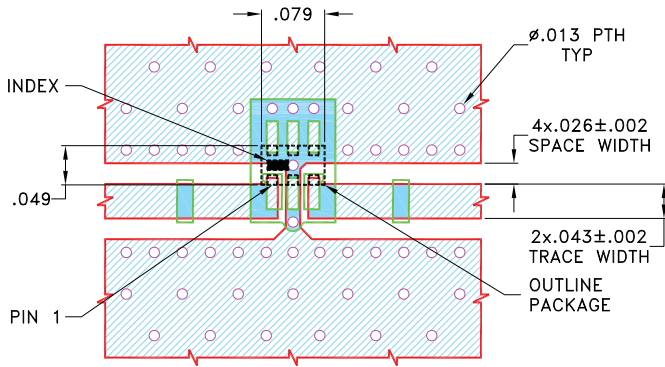
[www.minicircuits.com](http://www.minicircuits.com) P.O. Box 350166, Brooklyn, NY 11235-0003 (718) 934-4500 sales@minicircuits.com

REV. OR  
M176061  
HFCG-1760+  
EDU3654  
URJ  
191212  
Page 2 of 3

## Pad Connections

INPUT	1
OUTPUT	3
GROUND	2, 4, 5, 6

### Demo Board MCL P/N: TB-1104+ Suggested PCB Layout (PL-633)

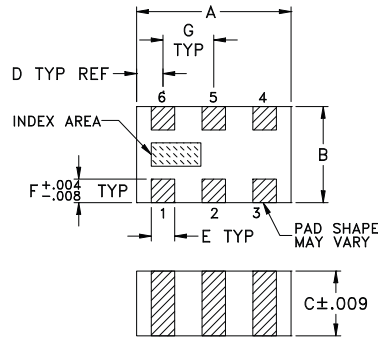


#### NOTES:

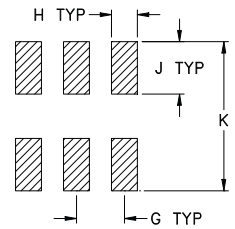
- TRACE WIDTH IS SHOWN FOR ROGERS (R04350B) WITH DIELECTRIC THICKNESS .020"±.0015". COPPER: 1/2 Oz. EACH SIDE. FOR OTHER MATERIALS TRACE WIDTH MAY NEED TO BE MODIFIED.
- BOTTOM SIDE OF THE PCB IS CONTINUOUS GROUND PLANE.

- DENOTES PCB COPPER LAYOUT WITH SMOBC (SOLDER MASK OVER BARE COPPER)
- DENOTES COPPER LAND PATTERN FREE OF SOLDERMASK

## Outline Drawing



## PCB Land Pattern



Suggested Layout,  
Tolerance to be within±002

## Outline Dimensions ( inch / mm)

A	B	C	D	E	F
.079	.049	.037	.014	.012	.012
2.00	1.25	0.95	0.35	0.30	0.30
G	H	J	K	Wt.	
.026	.014	.039	.110	grams	
0.65	0.35	1.00	2.80	.008	

Note: Please refer to case style drawing for details.

#### Notes

- Performance and quality attributes and conditions not expressly stated in this specification document are intended to be excluded and do not form a part of this specification document.
- Electrical specifications and performance data contained in this specification document are based on Mini-Circuit's applicable established test performance criteria and measurement instructions.
- The parts covered by this specification document are subject to Mini-Circuits standard limited warranty and terms and conditions (collectively, "Standard Terms"); Purchasers of this part are entitled to the rights and benefits contained therein. For a full statement of the Standard Terms and the exclusive rights and remedies thereunder, please visit Mini-Circuits' website at [www.minicircuits.com/MCLStore/terms.jsp](http://www.minicircuits.com/MCLStore/terms.jsp)