



WR28 SPDT/DPDT Failsafe, Ka Band, Waveguide
Electromechanical Relay Switch, 26.5 GHz to
40 GHz, 0.55 kW, O-Ring Groove, 12V

Waveguide Electromechanical Relay Switches Technical

PEWGS6056

Features

- 26.5 to 40 GHz SPDT Waveguide Switch
- Optional DPDT Configuration
- WR28 Waveguide with UG O-Ring Grooves
- Failsafe Actuator and Position Indicator
- Insertion Loss: 0.07 dB typ
- Isolation: 69 dB typ
- Switching Time: < 80 msec typ
- +12 Vdc Nominal Voltage
- Input Power Rating up to 0.55 kW CW max
- Unpressurized Peak Power Rating up to 13.3 kW
- Manual Override Access
- Fully Weatherized Package
- Quick Connect Circular DC Connector with Mate
- -40°C to +85°C Operating Temperature

Applications

- Electronic Warfare
- Electronic Countermeasures
- Microwave Radio
- VSAT
- Radar
- Space Systems
- Test Instrumentation
- Research and Development

Description

The PEWGS6056 WR28 waveguide electromechanical switch operates across a wide frequency range from 26.5 GHz to 40 GHz and is configured for single pole double throw (SPDT) operation. A shorting plate on port 3 can be removed for optional double pole double throw (DPDT) operation. This innovative design features a failsafe actuator and patented motor drive with arc suppression. The motor drive housing supports a viewable position indicator window and a cover that can be removed for manual override access. Impressive typical performance includes 0.07 dB insertion loss, 69 dB Isolation and 1.05:1 VSWR. The design operates across a temperature range of -40°C to +85°C, requires +12Vdc nominal bias voltage, and has an input power rating of up to 0.55 kW CW maximum, and an unpressurized peak power rating up to 13.3 kW. Operating life is 250K cycles minimum. The waveguide ports have UG O-Ring grooves with O-Rings included for pressurized operation. The rugged package design is fully weatherized for up to 100% humidity exposure and supports a quick connect circular 6 pin MIL-SPEC DC bias connector with mate included.

Electrical Specifications

Switch Type	SPDT/DPDT
Actuator Type	Failsafe
Actuator Options	Window Indicator, Manual Override

Description	Minimum	Typical	Maximum	Units
Frequency Range	26.5		40	GHz
Impedance		50		Ohms
Operating Voltage	10.8	12	13.2	Volts
Actuating Current @ 12 Volts		265	300	mA
VSWR		1.05:1	1.15:1	
Insertion Loss		0.07	0.15	dB
Isolation	55	69		dB
Switching Time		<80		ms
Input Power (CW)			550	Watts

Click the following link (or enter part number in "SEARCH" on website) to obtain additional part information including price, inventory and certifications: [WR28 SPDT/DPDT Failsafe, Ka Band, Waveguide Electromechanical Relay Switch, 26.5 GHz to 40 GHz, 0.55 kW, O-Ring Groove, 12V PEWGS6056](#)



WR28 SPDT/DPDT Failsafe, Ka Band, Waveguide
Electromechanical Relay Switch, 26.5 GHz to
40 GHz, 0.55 kW, O-Ring Groove, 12V

Waveguide Electromechanical Relay Switches Technical

PEWGS6056

Input Power (Peak/Unpressurized) 13.3 kWatts

Mechanical Specifications

Size

Length	2.11 in [53.59 mm]
Width/Diameter	2.11 in [53.59 mm]
Height	3.35 in [85.09 mm]
Weight	0.87 lbs [394.63 g]

Operating Life	250,000 Cycles
Operating Pressure	30 psig

Configuration

Waveguide Size	WR-28
Flange Type	UG O-Ring
Body Material and Plating	Aluminum, Black
Body Plating Specification	MIL-DTL-5541

Environmental Specifications

Temperature

Operating Range	-40 to +85 deg C
Storage Range	-55 to +100 deg C

Humidity	0 to 100% Fully Weatherized IAW IP67
----------	--------------------------------------

Compliance Certifications (see [product page](#) for current document)

Plotted and Other Data

Notes:

Click the following link (or enter part number in "SEARCH" on website) to obtain additional part information including price, inventory and certifications: [WR28 SPDT/DPDT Failsafe, Ka Band, Waveguide Electromechanical Relay Switch, 26.5 GHz to 40 GHz, 0.55 kW, O-Ring Groove, 12V PEWGS6056](#)



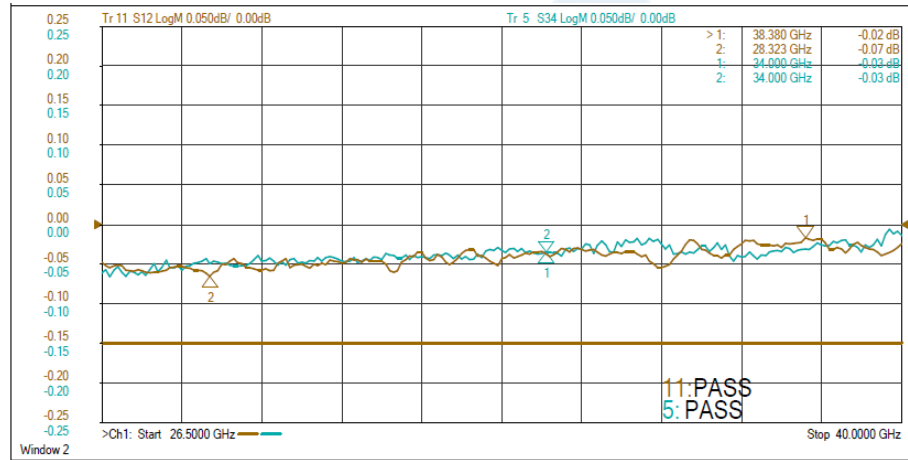
WR28 SPDT/DPDT Failsafe, Ka Band, Waveguide
Electromechanical Relay Switch, 26.5 GHz to
40 GHz, 0.55 kW, O-Ring Groove, 12V

Waveguide Electromechanical Relay Switches Technical

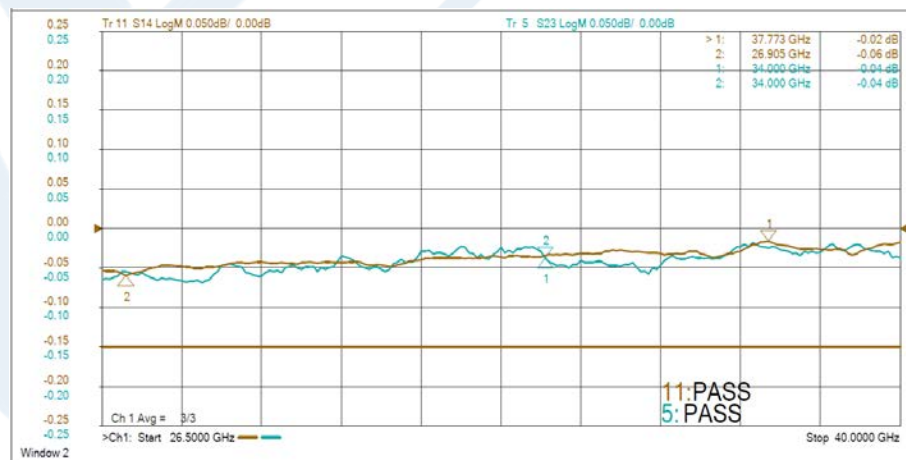
PEWGS6056

Typical Performance Data

Typical (Position 1) Insertion Loss



Typical (Position 2) Insertion Loss



Click the following link (or enter part number in "SEARCH" on website) to obtain additional part information including price, inventory and certifications: [WR28 SPDT/DPDT Failsafe, Ka Band, Waveguide Electromechanical Relay Switch, 26.5 GHz to 40 GHz, 0.55 kW, O-Ring Groove, 12V PEWGS6056](#)

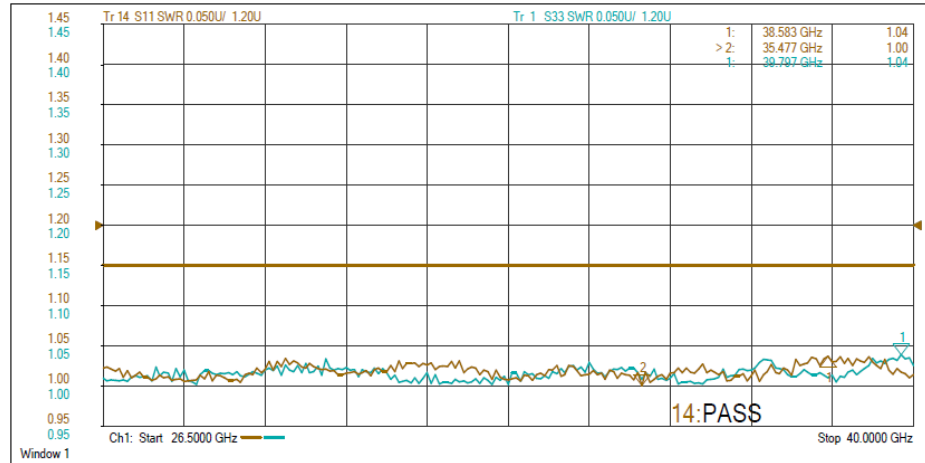


WR28 SPDT/DPDT Failsafe, Ka Band, Waveguide
Electromechanical Relay Switch, 26.5 GHz to
40 GHz, 0.55 kW, O-Ring Groove, 12V

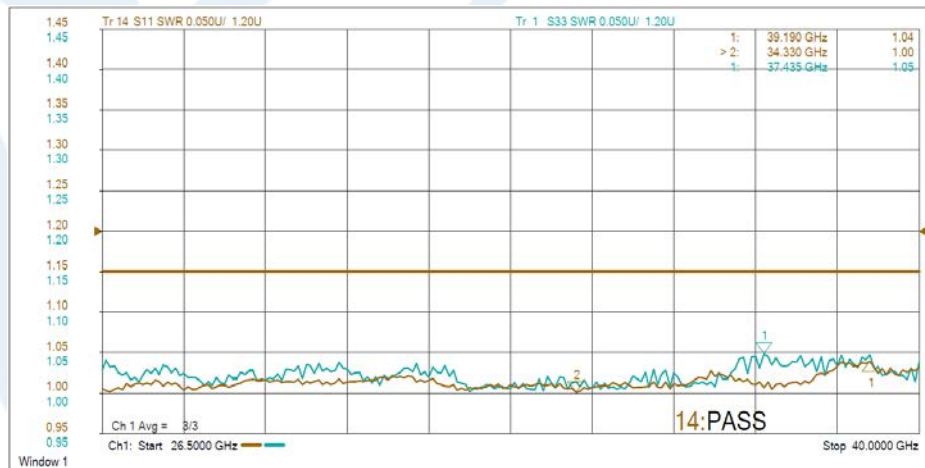
Waveguide Electromechanical Relay Switches Technical

PEWGS6056

Typical (Position 1)
VSWR



Typical (Position 2)
VSWR



Click the following link (or enter part number in "SEARCH" on website) to obtain additional part information including price, inventory and certifications: [WR28 SPDT/DPDT Failsafe, Ka Band, Waveguide Electromechanical Relay Switch, 26.5 GHz to 40 GHz, 0.55 kW, O-Ring Groove, 12V PEWGS6056](#)

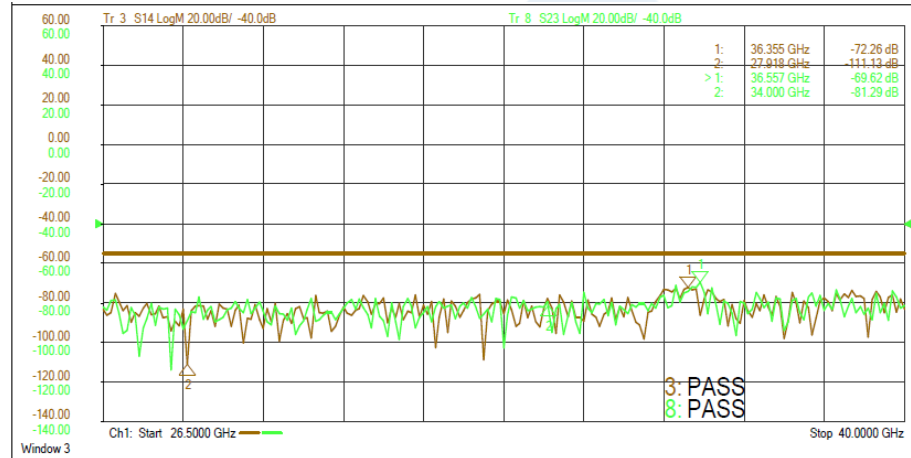


WR28 SPDT/DPDT Failsafe, Ka Band, Waveguide
Electromechanical Relay Switch, 26.5 GHz to
40 GHz, 0.55 kW, O-Ring Groove, 12V

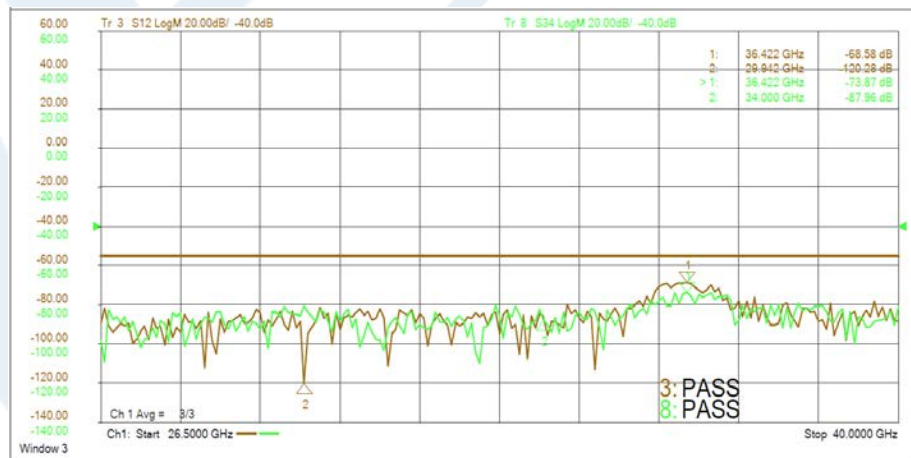
Waveguide Electromechanical Relay Switches Technical

PEWGS6056

Typical (Position 1)
Isolation



Typical (Position 2)
Isolation



Click the following link (or enter part number in "SEARCH" on website) to obtain additional part information including price, inventory and certifications: [WR28 SPDT/DPDT Failsafe, Ka Band, Waveguide Electromechanical Relay Switch, 26.5 GHz to 40 GHz, 0.55 kW, O-Ring Groove, 12V PEWGS6056](#)

WR28 SPDT/DPDT Failsafe, Ka Band, Waveguide
Electromechanical Relay Switch, 26.5 GHz to
40 GHz, 0.55 kW, O-Ring Groove, 12V



Waveguide Electromechanical Relay Switches Technical

PEWGS6056

WR28 SPDT/DPDT Failsafe, Ka Band, Waveguide Electromechanical Relay Switch, 26.5 GHz to 40 GHz, 0.55 kW, O-Ring Groove, 12V from Pasternack Enterprises has same day shipment for domestic and International orders. Our RF, microwave and millimeter wave products maintain a 99.4% availability and are part of the broadest selection in the industry.

Click the following link (or enter part number in "SEARCH" on website) to obtain additional part information including price, inventory and certifications: [WR28 SPDT/DPDT Failsafe, Ka Band, Waveguide Electromechanical Relay Switch, 26.5 GHz to 40 GHz, 0.55 kW, O-Ring Groove, 12V PEWGS6056](https://www.pasternack.com/wr-28-waveguide-electromechanical-relay-spd-dpdt-failsafe-switch-40-ghz-pewgs6056-p.aspx)

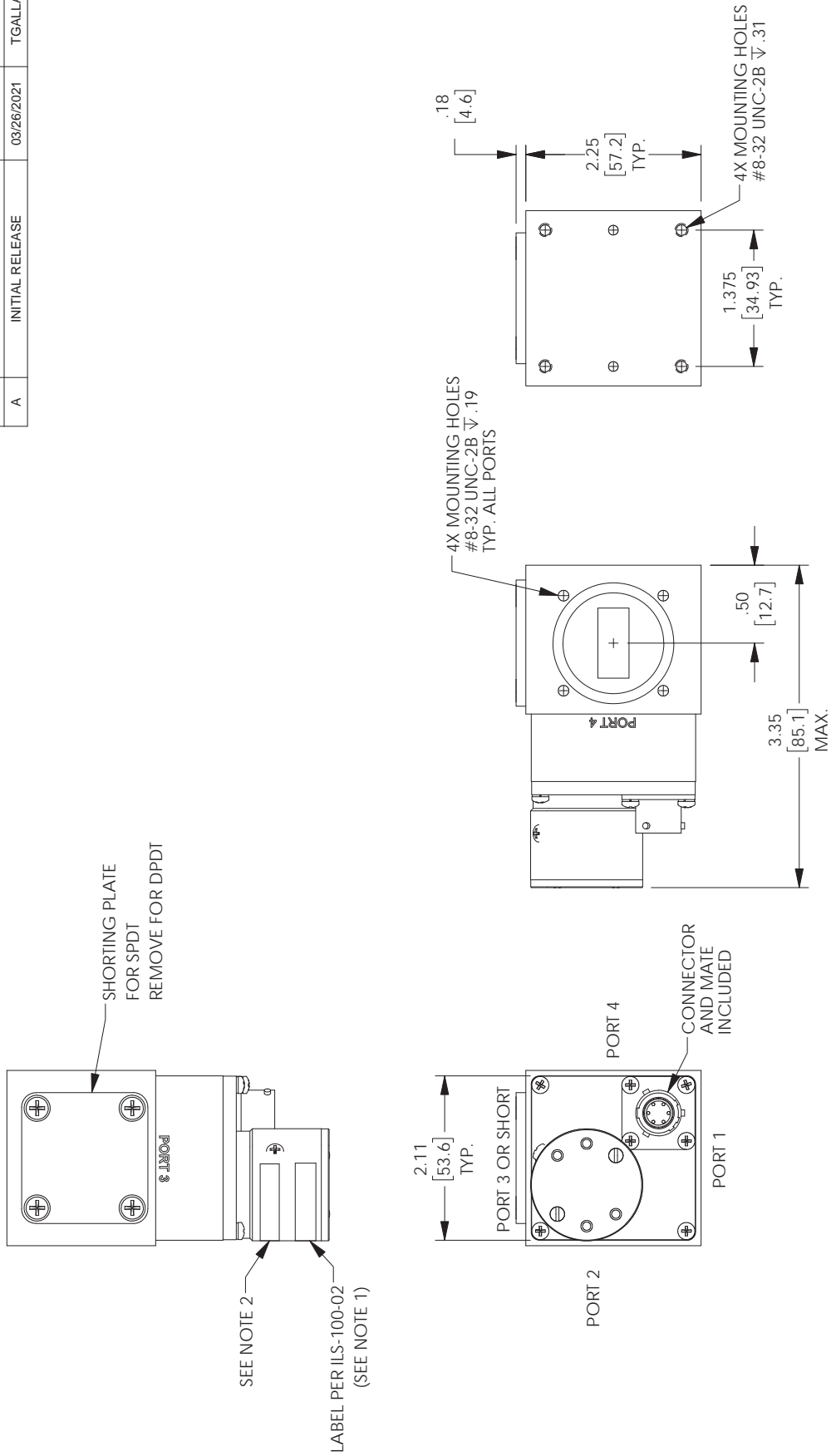
URL: <https://www.pasternack.com/wr-28-waveguide-electromechanical-relay-spd-dpdt-failsafe-switch-40-ghz-pewgs6056-p.aspx>

The information contained in this document is accurate to the best of our knowledge and representative of the part described herein. It may be necessary to make modifications to the part and/or the documentation of the part, in order to implement improvements. Pasternack reserves the right to make such changes as required. Unless otherwise stated, all specifications are nominal. Pasternack does not make any representation or warranty regarding the suitability of the part described herein for any particular purpose, and Pasternack does not assume any liability arising out of the use of any part or documentation.

PEWGS6056 CAD Drawing

WR28 SPDT/DPDT Failsafe, Ka Band, Waveguide Electromechanical Relay Switch, 26.5 GHz to 40 GHz, 0.55 kW, O-Ring Groove, 12V

REVISIONS			
REV.	DESCRIPTION	DATE	APPROVED
A	INITIAL RELEASE	03/26/2021	TGALLA



UNLESS OTHERWISE SPECIFIED LEADING DIMENSIONS ARE INCHES DIMENSIONS IN [] ARE MILLIMETERS

TOLERANCES:

FRACTIONS
 X = ±.2 [5.08]
 .XX = ±.02 [.51]
 .XXX = ±.005 [.13]

ANGLES ± 1°

CABLE LENGTH (L) TOLERANCES:
 L ≤ 12 [305] = +1 [25] / -0
 12 [305] < L ≤ 60 [1524] = +2 [51] / -0
 60 [1524] < L ≤ 120 [3048] = +4 [102] / -0
 120 [3048] < L ≤ 300 [7620] = +6 [152] / -0
 300 [7620] < L = +5% / -0

ALL DIMENSIONS SHOWN ARE FOR REFERENCE ONLY.

THIRD-ANGLE PROJECTION

THE INFORMATION AND DESIGN IN THIS DOCUMENT IS THE PROPERTY OF PASTERNAK CORPORATION ALL RIGHTS RESERVED.

SHEET 1 OF 2

SCALE N/A

REV A

PE PASTERNAK
 an INFINITI® brand

Pasternack Enterprises, Inc.
 P. O. Box 16759, Irvine, CA 92623.
 Phone: 1.949.261.1920 | 1.866.727.8376
 Fax: 1.949.261.7451
 Website: www.pasternack.com
 E-mail: sales@pasternack.com

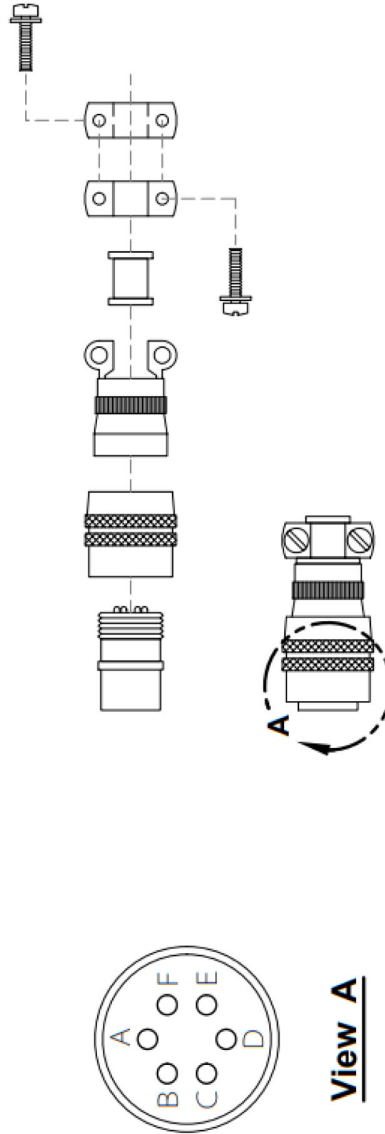
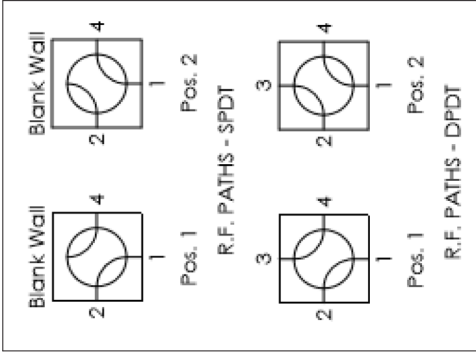
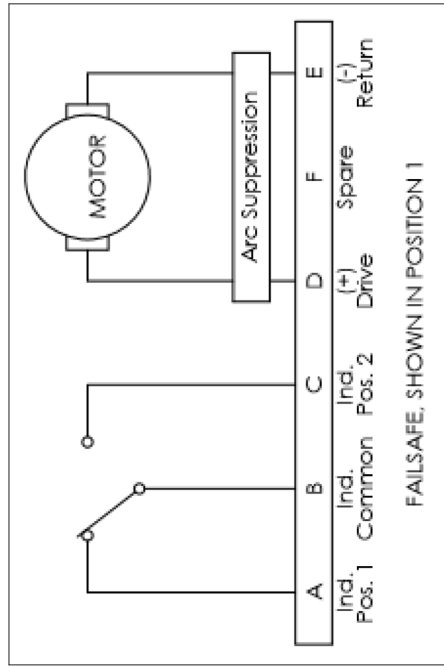
SIZE A CAGE CODE 53919 DRAWN BY DFRISIELLO ITEM NO. PEWGS6056

NOTES:
 1. LABEL PER ILS-100-02. FOR INTERNAL REFERENCE ONLY.
 2. SERIAL NUMBER AND DATE CODE ARE COMBINED. EX: 2020040500001

THESE COMMODITIES, TECHNOLOGY OR SOFTWARE WERE EXPORTED FROM THE UNITED STATES IN ACCORDANCE WITH THE EXPORT ADMINISTRATION REGULATIONS. DIVERSION CONTRARY TO U.S. LAW PROHIBITED.

PEWGS6056 CAD Drawing

WR28 SPDT/DPDT Failsafe, Ka Band, Waveguide Electromechanical Relay Switch, 26.5 GHz to 40 GHz, 0.55 kW, O-Ring Groove, 12V



<p>UNLESS OTHERWISE SPECIFIED LEADING DIMENSIONS ARE IN INCHES DIMENSIONS IN [] ARE MILLIMETERS</p> <p>TOLERANCES:</p> <p>X = +.2 (5.08) FRACTIONS XX = +.02 (.51) ±.132 .XXX = ±.005 (.13) ANGLES ± 1°</p> <p>CABLE LENGTH (L) TOLERANCES: L ≤ 12 [305] = +1 [25] / -0 12 [305] < L ≤ 60 [1524] = +2 [51] / -0 60 [1524] < L ≤ 120 [3048] = +4 [103] / -0 120 [3048] < L ≤ 300 [7620] = +6 [152] / -0 300 [7620] < L = +5% / -0</p> <p>ALL DIMENSIONS SHOWN ARE FOR REFERENCE ONLY.</p>	<p>PE PASTERNAK an INFINITI® brand</p> <p>Pasternack Enterprises, Inc. P. O. Box 16759, Irvine, CA 92623. Phone: 1.949.261.1920 1.866.727.8376 Fax: 1.949.261.7451 Website: www.pasternack.com E-mail: sales@pasternack.com</p>		<p>THIRD-ANGLE PROJECTION</p> <p>THE INFORMATION AND DESIGN IN THIS DOCUMENT IS THE PROPERTY OF PASTERNAK CORPORATION ALL RIGHTS RESERVED.</p> <p>SHEET 2 OF 2</p> <p>SCALE N/A</p>
	<p>SIZE A</p> <p>CAGE CODE 53919</p> <p>DRAWN BY DFRISIELLO</p> <p>ITEM NO. PEWGS6056</p> <p>REV A</p>		

THESE COMMODITIES, TECHNOLOGY OR SOFTWARE WERE EXPORTED FROM THE UNITED STATES IN ACCORDANCE WITH THE EXPORT ADMINISTRATION REGULATIONS. DIVERSION CONTRARY TO U.S. LAW PROHIBITED.