

WR-229 Waveguide 40 dB Crossguide Coupler, CPR-229G Flange, N Female Coupled Port, 3.22 GHz to 4.9 GHz, Aluminum

Waveguide Couplers Technical Data Sheet

PEWCP1081-40

The PEWCP1081-40 is a 40 dB WR-229 three port crossguide coupler with integrated N Female connector for the coupled port. This coupler can be mounted directly into the waveguide signal path, connected via coax to allow signal sampling /monitoring. The coupler has a typical VSWR of 1.1:1 and are made of Aluminum with CPR-229G flanges. The PEWCP1081-40 is part of a family of cross guide couplers offered by Pasternack with coupling values ranging from 20 to 50 dB.

Features

- Three Port Crossguide Waveguide Coupler
- 40±1.5 dB Nominal Coupling Level
- Integrated N Female Connector for the coupled port
- 3.22 GHz to 4.9 GHz Frequency Range
- Low VSWR < 1.25:1

Applications

- Test Benches
- Radar
- Satellite
- Microwave Radio
- Attenuation Measurements
- Power Measurements
- Source Leveling

Electrical Specifications

Description	Minimum	Typical	Maximum	Units
Frequency Range	3.22		4.9	GHz
Coupler				
Nominal Coupling Level		40		dB
Coupling Accuracy			±1.5	dB
Directivity	18			dB
Insertion Loss		0.1		dB
Main Line VSWR			1.1:1	
Secondary Line VSWR			1.25:1	
Input Power (CW)			1.8	kWatts
Input Power, Peak			800	kWatts

Mechanical Specifications

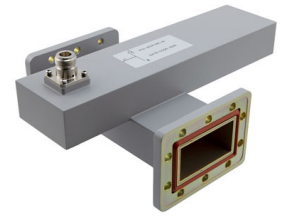
Size

Length	9.449 in [240 mm]
Width	6.693 in [170 mm]
Height	4.2 in [106.68 mm]
Weight	1.764 lbs [800.14 g]

Interface

Waveguide Size	WR-229
----------------	--------

Click the following link (or enter part number in "SEARCH" on website) to obtain additional part information including price, inventory and certifications: [WR-229 Waveguide 40 dB Crossguide Coupler, CPR-229G Flange, N Female Coupled Port, 3.22 GHz to 4.9 GHz, Aluminum PEWCP1081-40](#)



WR-229 Waveguide 40 dB Crossguide Coupler, CPR-229G
Flange, N Female Coupled Port, 3.22 GHz to 4.9 GHz, Aluminum

Waveguide Couplers Technical Data Sheet

PEWCP1081-40

Flange Type	CPR-229G
RF Connector Type	N Female
Coupler Body Material and Plating	Aluminum, Chromate

Environmental Specifications

Compliance Certifications (see [product page](#) for current document)

Plotted and Other Data

Notes:

WR-229 Waveguide 40 dB Crossguide Coupler, CPR-229G Flange, N Female Coupled Port, 3.22 GHz to 4.9 GHz, Aluminum from Pasternack Enterprises has same day shipment for domestic and International orders. Our RF, microwave and millimeter wave products maintain a 99.4% availability and are part of the broadest selection in the industry.

Click the following link (or enter part number in "SEARCH" on website) to obtain additional part information including price, inventory and certifications: [WR-229 Waveguide 40 dB Crossguide Coupler, CPR-229G Flange, N Female Coupled Port, 3.22 GHz to 4.9 GHz, Aluminum PEWCP1081-40](#)

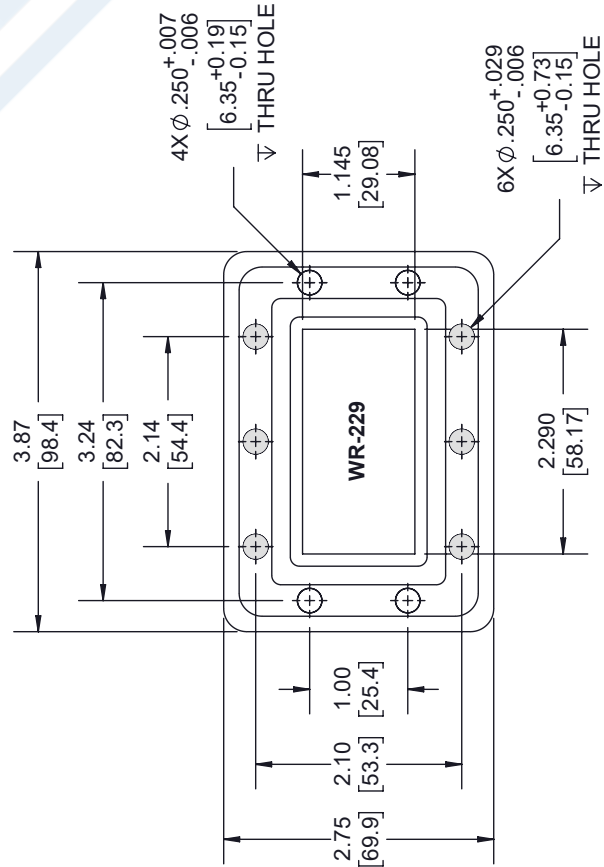
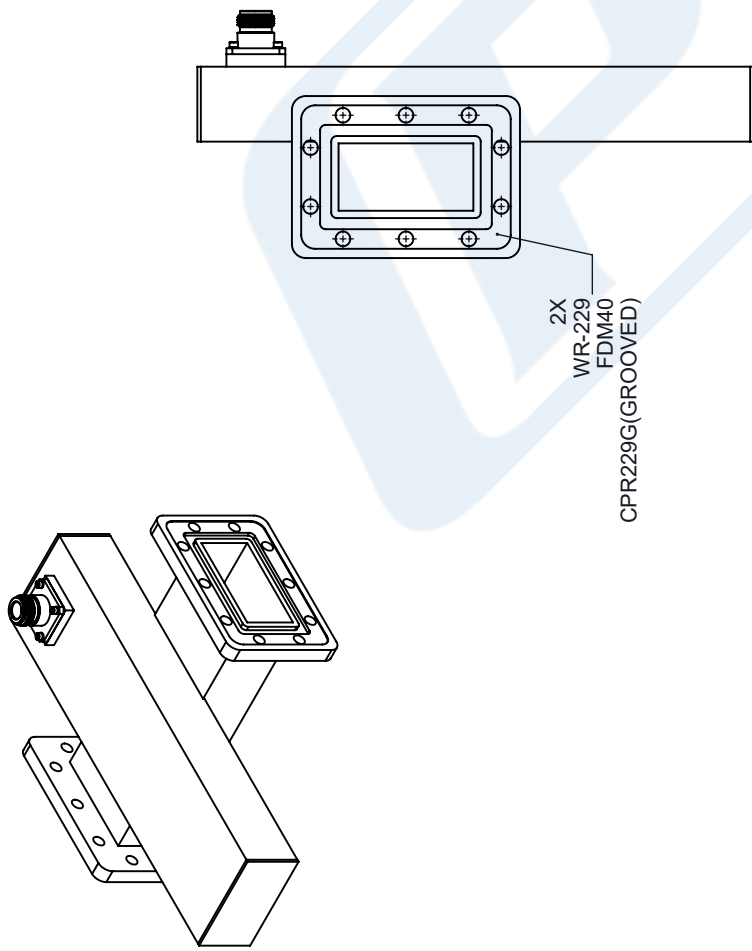
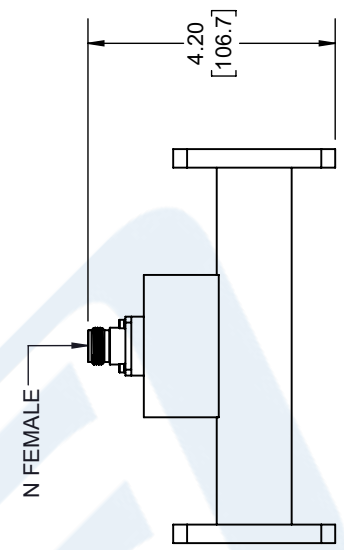
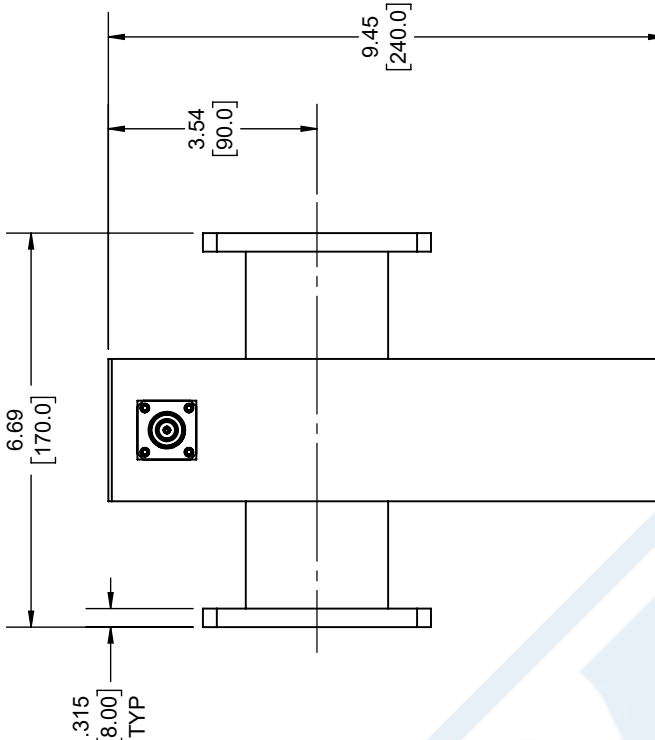
URL: <https://www.pasternack.com/40-db-wr-229-waveguide-crossguide-coupler-pewcp1081-40-p.aspx>

The information contained in this document is accurate to the best of our knowledge and representative of the part described herein. It may be necessary to make modifications to the part and/or the documentation of the part, in order to implement improvements. Pasternack reserves the right to make such changes as required. Unless otherwise stated, all specifications are nominal. Pasternack does not make any representation or warranty regarding the suitability of the part described herein for any particular purpose, and Pasternack does not assume any liability arising out of the use of any part or documentation.

PEWCP1081-40 CAD Drawing

WR-229 Waveguide 40 dB Crossguide Coupler, CPR-229G Flange, N Female Coupled Port, 3.22 GHz to 4.9 GHz, Aluminum

REVISIONS			
REV.	DESCRIPTION	DATE	APPROVED
A	INITIAL RELEASE	7/7/2022	S. PONG



THIRD-ANGLE PROJECTION

THE INFORMATION AND DESIGN IN THIS DOCUMENT IS THE PROPERTY OF PASTERNAK CORPORATION ALL RIGHTS RESERVED.

SHEET 1 OF 1

SCALE N/A

REV A

PE PASTERNAK
an INFINITE brand

Pasternack Enterprises, Inc.
P.O. Box 16759, Irvine, CA 92623.
Phone: 1.949.261.1920 | 1.866.727.8376
Fax: 1.949.261.7451
Website: www.pasternack.com
E-mail: sales@pasternack.com

UNLESS OTHERWISE SPECIFIED LEADING DIMENSIONS ARE INCHES DIMENSIONS IN [] ARE MILLIMETERS

TOLERANCES:

FRACTIONS: .X = ±.2 [5.08] ±.132
.XX = ±.02 [.51] ±.132
.XXX = ±.005 [.13] ANGLES ± 1°

CABLE LENGTH (L), TOLERANCES:
L ≤ 12 [305] = +1 [25] / -0
12 [305] < L ≤ 60 [1524] = +2 [51] / -0
60 [1524] < L ≤ 120 [3048] = +4 [102] / -0
120 [3048] < L ≤ 300 [7620] = +6 [152] / -0
300 [7620] < L = +5% / -0

ALL DIMENSIONS SHOWN ARE FOR REFERENCE ONLY.

SIZE A CAGE CODE 53919 DRAWN BY K.DANG ITEM NO. PEWCP1081-40

THESE COMMODITIES, TECHNOLOGY OR SOFTWARE WERE EXPORTED FROM THE UNITED STATES IN ACCORDANCE WITH THE EXPORT ADMINISTRATION REGULATIONS. DIVERSION CONTRARY TO U.S. LAW PROHIBITED.