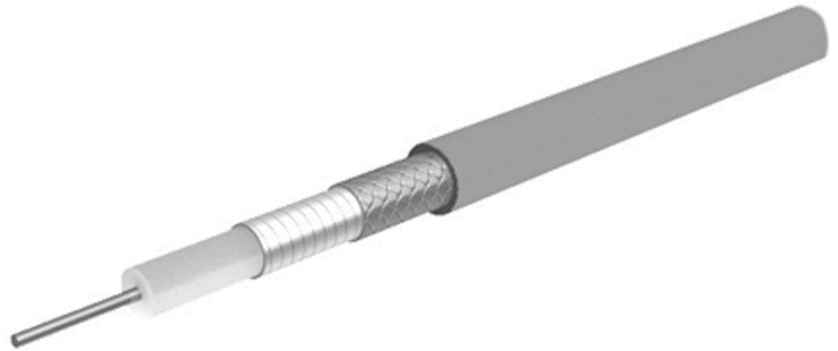


High-flexible, 50 Ohm, 26.5 GHz, 165°C, ø5.5 mm, FEP jacket

SUCOFLEX_526

Properties

- Applicable up to 26.5 GHz
- High phase- and amplitude stability with flexure and movement
- Excellent insertion and return loss
- Precise and repeatable measurements
- Long life time - lower measurement cost



Construction			
Component	Material	Detail	Diameter
Centre conductor	Copper, Silver plated	Strand, Low-loss	
Dielectric	PTFE (Polytetrafluoroethylene)		
Outer conductor	Copper, Silver plated	Wrapped foil, 100%	
Outer braid	Copper, Silver plated	Braid	
Jacket	FEP (Fluorinated ethylene propylene)	RAL 5015 - bl	5.5mm

Electrical data	
Impedance	50 Ω
Operating frequency	26.5 GHz
Capacitance	87 pF
Velocity of signal propagation	77 %
Signal delay	4.3 ns/m
Screening effectiveness	≥ 90 dB at frequency 1 GHz ... 18GHz
Insulation resistance	100000000 MΩ*m
Operating Voltage (at sea level)	≤ 1.2 kVrms

Mechanical data	
Weight	approx. 70 g/m
Static bending radius	≥ 16 mm
Dynamic bending radius	≥ 25 mm

Environmental data	
Operation temperature	-55 °C ... 165 °C
Fire characteristics	contains halogene

High-flexible, 50 Ohm, 26.5 GHz, 165°C, ø5.5 mm, FEP jacket

SUCOFLEX_526

Additional Information

Only available as cable assembly, not sold as bulk

Suitable connectors

Cable group U98

Ordering information

Item number	Item description	Available as assembly only
85206890	SUCOFLEX_526	Yes

Power MatrixCalculation: typical Attenuation [formula: $(a \cdot f^{0.5} + b \cdot f)$] and maximum Power CW [formula: $(p/f^{0.5})$]

a coefficient typical =	0.229	b coefficient typical =	0.0071
fmax =	26.5	P at 1 GHz =	907.0

Frequency GHz	Nom. attenuation (dB/m)	Nom. attenuation Max. (dB/ft)	CW power (W)
	sea level 25°C ambient temperature	sea level 25°C ambient temperature	sea level 40°C ambient temperature
0.20	0.104	0.032	2028
0.40	0.148	0.045	1434
0.60	0.182	0.055	1171
0.80	0.211	0.064	1014
1.00	0.236	0.072	907
1.20	0.259	0.079	828
1.40	0.281	0.086	767
1.60	0.301	0.092	717
1.80	0.320	0.098	676
2.00	0.338	0.103	641
4.00	0.486	0.148	454
6.00	0.604	0.184	370
8.00	0.705	0.215	321
10.00	0.795	0.242	287
20.00	1.166	0.355	203
26.50	1.367	0.417	176

HUBER+SUHNER is certified by ISO 9001, ISO 14001, ISO 45001, IATF 16949, AS/EN 9100 and ISO/TS 22163-IRIS. Waiver: Facts and figures herein are for information only and do not represent any warranty of any kind.
DOCUMENT PIM-P30551 / Date of publication: 13.12.2023 / uncontrolled copy