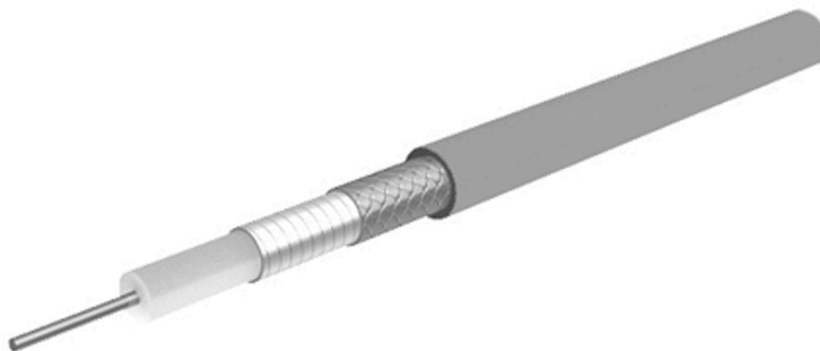


## High-flexible, 50 Ohm, 70 GHz, 165°C, ø3.3 mm, FEP jacket SUCOFLEX\_570

### Properties

- Applicable up to 70 GHz
- High phase- and amplitude stability with flexure and movement
- Excellent insertion and return loss
- Precise and repeatable measurements
- Long life time - lower measurement cost



Construction			
Component	Material	Detail	Diameter
Centre conductor	Copper, Silver plated	Wire	
Dielectric	PTFE (Polytetrafluoroethylene)		
Outer conductor	Copper, Silver plated	Wrapped foil, 100%	
Outer braid	Copper, Silver plated	Braid	
Jacket	FEP (Fluorinated ethylene propylene)	RAL 5015 - bl	3.3mm

Electrical data	
Impedance	50 Ω
Operating frequency	≤ 70 GHz
Capacitance	87 pF
Velocity of signal propagation	77 %
Signal delay	4.3 ns/m
Screening effectiveness	< 90 dB at frequency 0.1 GHz ... 18GHz
Insulation resistance	< 100000000 MΩ*m
Operating Voltage (at sea level)	≤ 0.5 kV

Mechanical data	
Weight	approx. 25 g/m
Static bending radius	≥ 11 mm
Dynamic bending radius	≥ 20 mm

Environmental data	
Operation temperature	-55 °C ... 165°C
Fire characteristics	contains halogene

**High-flexible, 50 Ohm, 70 GHz, 165°C, ø3.3 mm, FEP jacket**

SUCOFLEX\_570

**Additional Information**

Only available as cable assembly, not sold as bulk

**Suitable connectors**

Cable group U98

**Ordering information**

Item number	Item description	Available as assembly only
85137559	SUCOFLEX_570	Yes

**Power Matrix**

Calculation: typical Attenuation [ formula: (a\*f^0.5 + b\*f) ] and maximum Power CW [ formula: (p/f^0.5) ]

a coefficient typical =	<b>0.64</b>	b coefficient typical =	<b>0.01</b>
fmax =	<b>70.0</b>	P at 1 GHz =	<b>171.0</b>

Frequency GHz	Nom. attenuation (dB/m)	Nom. attenuation Max. (dB/ft)	CW power (W)
	sea level 25°C ambient temperature	sea level 25°C ambient temperature	sea level 40°C ambient temperature
0.20	0.288	0.088	382
0.40	0.409	0.125	270
0.60	0.502	0.153	221
0.80	0.580	0.177	191
1.00	0.650	0.198	171
1.20	0.713	0.217	156
1.40	0.771	0.235	145
1.60	0.826	0.252	135
1.80	0.877	0.267	127
2.00	0.925	0.282	121
4.00	1.320	0.402	86
6.00	1.628	0.496	70
8.00	1.890	0.576	60
10.00	2.124	0.647	54
20.00	3.062	0.933	38
40.00	4.448	1.356	27
60.00	5.557	1.694	22
70.00	6.055	1.846	20

HUBER+SUHNER is certified by ISO 9001, ISO 14001, ISO 45001, IATF 16949, AS/EN 9100 and ISO/TS 22163-IRIS. Waiver: Facts and figures herein are for information only and do not represent any warranty of any kind.  
DOCUMENT PIM-P30047 / Date of publication: 27.10.2023 / uncontrolled copy