



## 2.92mm Female PCB Mount with Tab Contact 40GHz VSWR1.2, 0.0295 Inches End Launch PCB Connector

### RF Connectors Technical Data Sheet

**PE45917**

#### Configuration

- 2.92mm Female Connector
- 50 Ohms
- Straight Body Geometry

#### Features

- Max. Operating Frequency 40 GHz
- Excellent VSWR of 1.2:1
- Gold Plated Beryllium Copper Contact

#### Applications

- General Purpose Test
- PCB Applications

#### Description

PE45917 2.92mm female PCB RF connector has a 50 Ohms impedance. Our 2.92mm female PCB connector provides a maximum frequency of 40 GHz. Our high-quality radio frequency coaxial connector is used for general purpose tests and printed circuit board applications. This 2.92mm female RF connector is stocked to be readily available for same business day shipment.

The Pasternack 2.92mm female PCB connector has a maximum VSWR of 1.2:1. The Pasternack 2.92mm PCB connector has a brass body with gold plating. Our PE45917 2.92mm connector uses a gold-plated brass outer conductor. Pasternack's 2.92mm female connector has a maximum operating voltage of 250 Vrms and a dielectric withstanding voltage of 750 Vrms.

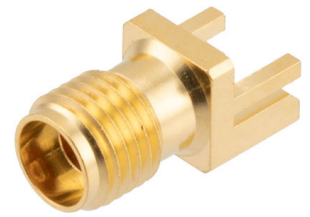
Pasternack RF connector has a maximum inner conductor and outer conductor resistance of 3 mOhms and 2 mOhms respectively. The radio frequency connector is made from brass material and has a contact life of 500 cycles or more. The Pasternack PE45917 2.92mm connector operates at a temperature range of -40 to +165 deg C. Our female RF connector with PCB termination has a 0.252 dB maximum insertion loss.

This Pasternack 2.92mm female connector will ship the same business day as purchased. Our 2.92mm female connector is part of RF, microwave, and millimeter wave components in stock for local, domestic, and international shipment. For further information on similar products, our expert technical support and trained sales team can get you the ideal RF connector as per your requirements.

#### Electrical Specifications

| Description                          | Minimum | Typical | Maximum | Units |
|--------------------------------------|---------|---------|---------|-------|
| Frequency Range                      | DC      |         | 40      | GHz   |
| VSWR                                 |         |         | 1.2:1   |       |
| Insertion Loss                       |         |         | 0.252   | dB    |
| Operating Voltage (AC)               |         |         | 250     | Vrms  |
| Impedance                            |         | 50      |         | Ohms  |
| Dielectric Withstanding Voltage (AC) |         |         | 750     | Vrms  |
| Inner Conductor DC Resistance        |         |         | 3       | mOhms |
| Outer Conductor DC Resistance        |         |         | 2       | mOhms |
| Insulation Resistance                | 5,000   |         |         | MOhms |
| RF Leakage                           | 100     |         |         | dB    |

Click the following link (or enter part number in "SEARCH" on website) to obtain additional part information including price, inventory and certifications: [2.92mm Female PCB Mount with Tab Contact 40GHz VSWR1.2, 0.0295 Inches End Launch PCB Connector PE45917](#)



2.92mm Female PCB Mount with Tab Contact 40GHz  
VSWR1.2, 0.0295 Inches End Launch PCB Connector

## RF Connectors Technical Data Sheet

**PE45917**

### Mechanical Specifications

#### Size

|                       |                                      |
|-----------------------|--------------------------------------|
| Length                | 0.56 in [14.22 mm]                   |
| Width                 | 0.25 in [6.35 mm]                    |
| Height                | 0.25 in [6.35 mm]                    |
| Weight                | 0.02 lbs [9.07 g]                    |
| Mating Cycles         | 500 Cycles                           |
| Mating Torque         | 11.47 to 15 in-lbs [1.30 to 1.70 Nm] |
| Cable Retention Force | 4.9 lbs 2.22 kg                      |

### Material Specifications

| Description     | Material         | Plating |
|-----------------|------------------|---------|
| Contact         | Beryllium Copper | Gold    |
| Insulation      | PEI              |         |
| Outer Conductor | Brass            | Gold    |
| Body            | Brass            | Gold    |

### Environmental Specifications

#### Temperature

|                 |                                      |
|-----------------|--------------------------------------|
| Operating Range | -40 to +165 deg C                    |
| Humidity        | MIL-STD-202, Method 206              |
| Thermal Shock   | MIL-STD-202, Method 107, Condition B |
| Salt Spray      | MIL-STD-202, Method 101, Condition B |

**Compliance Certifications** (see [product page](#) for current document)

### Plotted and Other Data

Notes:

Click the following link (or enter part number in "SEARCH" on website) to obtain additional part information including price, inventory and certifications: [2.92mm Female PCB Mount with Tab Contact 40GHz VSWR1.2, 0.0295 Inches End Launch PCB Connector PE45917](#)



2.92mm Female PCB Mount with Tab Contact 40GHz  
VSWR1.2, 0.0295 Inches End Launch PCB Connector

**RF Connectors**  
**Technical Data Sheet**

**PE45917**

2.92mm Female PCB Mount with Tab Contact 40GHz VSWR1.2, 0.0295 Inches End Launch PCB Connector from Pasternack Enterprises has same day shipment for domestic and International orders. Our RF, microwave and millimeter wave products maintain a 99.4% availability and are part of the broadest selection in the industry.

Click the following link (or enter part number in "SEARCH" on website) to obtain additional part information including price, inventory and certifications: [2.92mm Female PCB Mount with Tab Contact 40GHz VSWR1.2, 0.0295 Inches End Launch PCB Connector PE45917](https://www.pasternack.com/2.92mm-female-pcb-connector-pe45917-p.aspx)

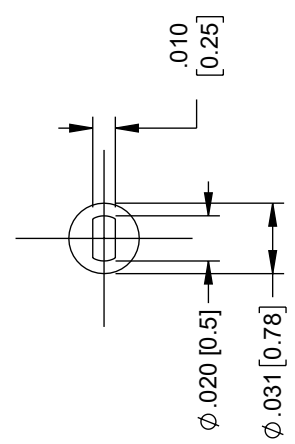
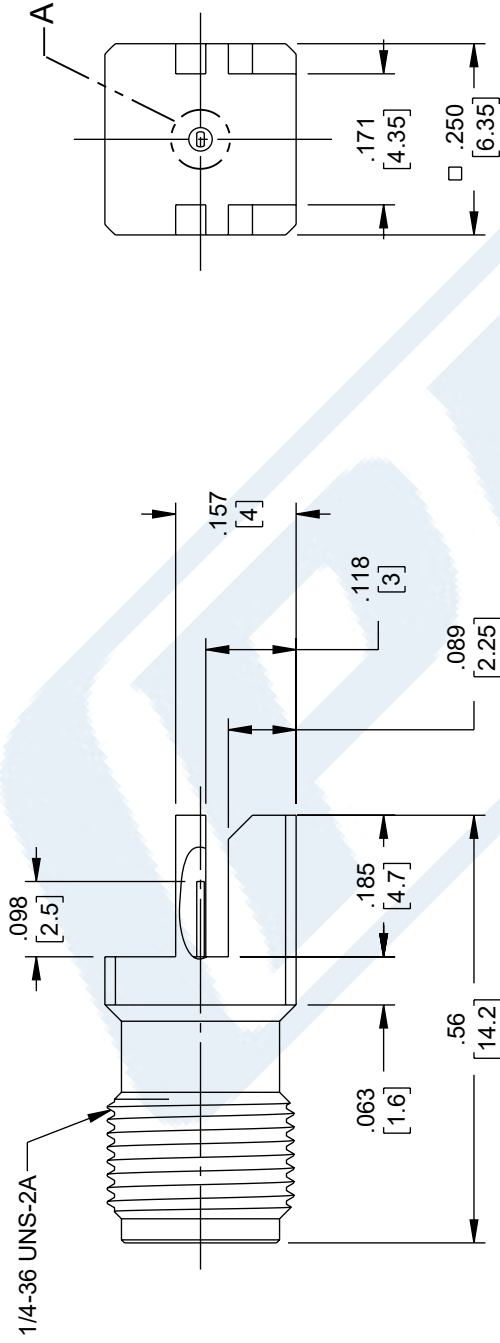
URL: <https://www.pasternack.com/2.92mm-female-pcb-connector-pe45917-p.aspx>

The information contained in this document is accurate to the best of our knowledge and representative of the part described herein. It may be necessary to make modifications to the part and/or the documentation of the part, in order to implement improvements. Pasternack reserves the right to make such changes as required. Unless otherwise stated, all specifications are nominal. Pasternack does not make any representation or warranty regarding the suitability of the part described herein for any particular purpose, and Pasternack does not assume any liability arising out of the use of any part or documentation.

# PE45917 CAD Drawing

2.92mm Female PCB Mount with Tab Contact 40GHz VSWR1.2,  
0.0295 Inches End Launch PCB Connector

|          |     |                 |            |            |          |
|----------|-----|-----------------|------------|------------|----------|
| 1        | 2   | 3               | 4          | 5          | 6        |
| REVISION |     |                 |            |            |          |
| ZONE     | REV | DESCRIPTION     | DATE       | CHANGED BY | APPROVED |
|          | A   | INITIAL RELEASE | 09/11/2023 | KGLEBOVA   | AGANWANI |



DETAIL A

**PE PASTERNAK**  
an INFINIT@ brand

Website: [www.Pasternack.com](http://www.Pasternack.com)  
Phone: 1.866.727.8376 | 1.949.261.1920

DESCRIPTION  
2.92mm JACK PCB MOUNT END LAUNCH (T=0.75) WITH TAB CONTACT 40GHz VSWR1.2

INTERPRET ALL DIMENSIONS AND TOLERANCES PER ASME Y14.5

SCALE: NONE SHEET: 1 OF 1

CAGE CODE: 53919 DRAWN BY: KGLEBOVA ITEM NO.: PE45917 REV: A

UNLESS OTHERWISE SPECIFIED, DIMENSIONS ARE IN INCHES. DIMENSIONS IN PARENTHESES ARE IN MILLIMETERS.

TOLERANCES:

|                     |                  |
|---------------------|------------------|
| .X = ±.2 [5]        | FRACTIONS ± 1/32 |
| .XX = ±.02 [0.5]    | ANGLES ± 1°      |
| .XXX = ±.005 [0.13] |                  |

CABLE LENGTH TOLERANCES:

|   |  |
|---|--|
| <math>< 12 [305]</math> ±.1 [2.5]                   | <math>12 [305] \leq 60 [1524]</math> ±.2 [5.1]     |
| <math>60 [1524] \leq 120 [3048]</math> ±.4 [10.2]   | <math>120 [3048] \leq 300 [7620]</math> ±.6 [15.2] |
| <math>300 [7620] \leq 600 [15240]</math> ±.8 [20.3] | >600 [15240] ±.1 [2.5]                             |

ALL DIMENSIONS ARE FOR REFERENCE ONLY. ALL DIMENSIONS ARE TO UNLESS OTHERWISE SPECIFIED. UNLESS OTHERWISE SPECIFIED, DIMENSIONS ARE IN INCHES. DIMENSIONS IN PARENTHESES ARE IN MILLIMETERS. UNLESS OTHERWISE SPECIFIED, DIMENSIONS ARE IN INCHES. DIMENSIONS IN PARENTHESES ARE IN MILLIMETERS. UNLESS OTHERWISE SPECIFIED, DIMENSIONS ARE IN INCHES. DIMENSIONS IN PARENTHESES ARE IN MILLIMETERS.

THE INFORMATION CONTAINED IN THIS DRAWING IS THE SOLE PROPERTY OF INFINITE ELECTRONICS, INC. ANY REPRODUCTION IN PART OR WHOLE WITHOUT THE WRITTEN PERMISSION OF INFINITE ELECTRONICS, INC. IS PROHIBITED. THESE COMMODITIES, TECHNOLOGY OR SOFTWARE WERE EXPORTED FROM THE UNITED STATES IN ACCORDANCE WITH THE EXPORT ADMINISTRATION REGULATIONS. DIVERSION CONTRARY TO U.S. LAW PROHIBITED.