

Broadband Horn Antenna, Dual Polarized 0.8 GHz to 12 GHz 11 dBi Gain, SMA Female Connector

Specialty Waveguide Antennas Technical Data Sheet

PEWAN1163

Features

- Ultra Broadband 0.8 GHz to 12 GHz
- Open Boundary Quad-Ridge Waveguide
- Dual Polarized
- 11 dBi Nominal Gain
- Dual SMA Female Coaxial Connector
- Mounting Bracket Included
- Powder Coated Aluminum

Applications

- Antenna Measurements
- Laboratory Use
- Microwave Testing
- Radome Testing
- EMC measurement
- Satellite Antenna Testing
- Radar Cross Section

Description

The PEWAN1163 dual polarized broadband horn antenna (also known as a quad ridge horn antenna) from Pasternack is part of our comprehensive selection of broadband antennas. This quad-ridge waveguide horn features dual SMA Female coaxial connector and operates from 0.8 GHz to 12 GHz.

Our PEWAN1163 open boundary dual polarized broadband horn antenna has a nominal gain of 11 dBi with a typical input VSWR of 1.5:1. Pasternack's broadband horns are available with gain values from 6 to 21 dBi with varying frequency ranges to suit the application needs.

Quad ridge horn antennas, such as the PEWAN1163 are used in a wide variety of applications due to the high-power handling capability, low loss, high directivity, and near constant electrical performance. Our broadband antennas are part of over 40,000 RF, microwave, and millimeter wave components from Pasternack available worldwide and ship same day.

Configuration

Pattern	Directional
Polarization	Dual Linear
Antenna Design Type	Broadband Gain Horn
RF Connector	SMA Female

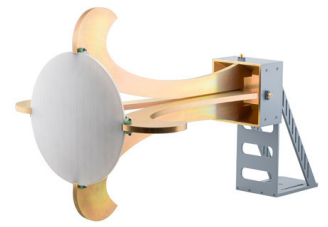
Electrical Specifications

Description	Minimum	Typical	Maximum	Units
Frequency Range	0.8		12	GHz
Nominal Gain		11		dBi
VSWR		1.5:1		

Performance by Frequency

Description	F1	F2	F3	F4	F5	Units
Frequency Range	0.8 to 3.2	3.2 to 5.6	5.6 to 8	8 to 10.4	10.4 to 12	GHz
Gain, Typ	10	13.5	15	14	15	dB

Click the following link (or enter part number in "SEARCH" on website) to obtain additional part information including price, inventory and certifications: [Broadband Horn Antenna, Dual Polarized 0.8 GHz to 12 GHz 11 dBi Gain, SMA Female Connector PEWAN1163](#)



Broadband Horn Antenna, Dual Polarized 0.8 GHz to 12 GHz 11 dBi Gain, SMA Female Connector

Specialty Waveguide Antennas Technical Data Sheet

PEWAN1163

Mechanical Specifications

Size

Length	12.755906 in [324 mm]
Width	12.755906 in [324 mm]
Height	17.874016 in [454 mm]
Weight	10 lbs [4.54 kg]

Body Material and Plating	Aluminum
RF Connector	SMA Female

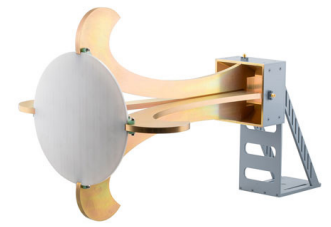
Environmental Specifications

Compliance Certifications (see [product page](#) for current document)

Plotted and Other Data

Notes:

Click the following link (or enter part number in "SEARCH" on website) to obtain additional part information including price, inventory and certifications: [Broadband Horn Antenna, Dual Polarized 0.8 GHz to 12 GHz 11 dBi Gain, SMA Female Connector PEWAN1163](#)

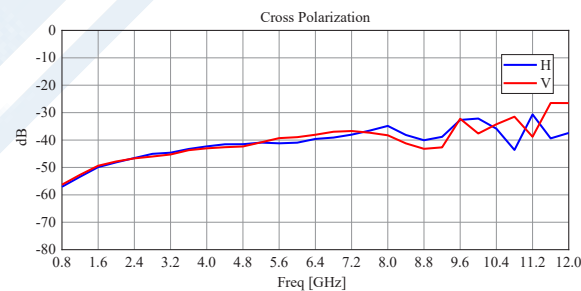
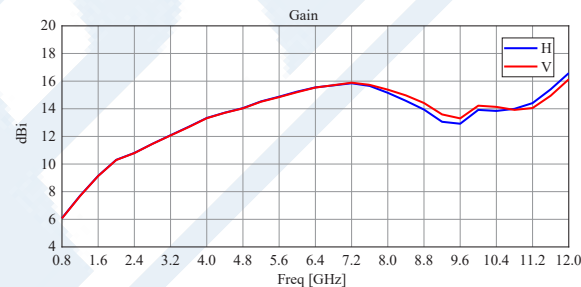
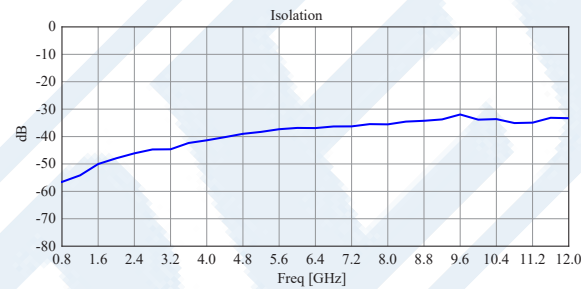
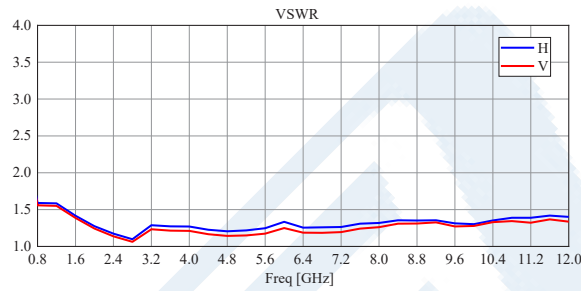


Broadband Horn Antenna, Dual Polarized 0.8 GHz to 12 GHz 11 dBi Gain, SMA Female Connector

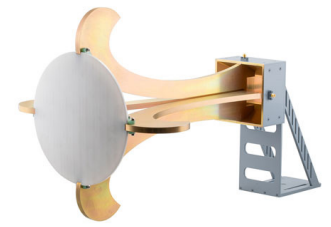
Specialty Waveguide Antennas Technical Data Sheet

PEWAN1163

Typical Performance Data



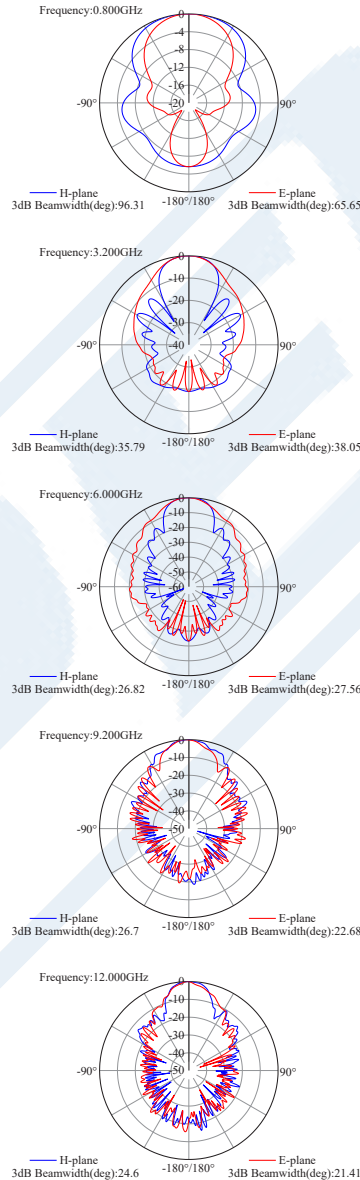
Click the following link (or enter part number in "SEARCH" on website) to obtain additional part information including price, inventory and certifications: [Broadband Horn Antenna, Dual Polarized 0.8 GHz to 12 GHz 11 dBi Gain, SMA Female Connector PEWAN1163](#)



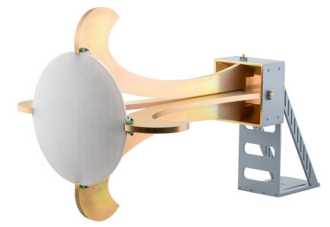
Broadband Horn Antenna, Dual Polarized 0.8 GHz to 12 GHz 11 dBi Gain, SMA Female Connector

Specialty Waveguide Antennas Technical Data Sheet

PEWAN1163



Click the following link (or enter part number in "SEARCH" on website) to obtain additional part information including price, inventory and certifications: [Broadband Horn Antenna, Dual Polarized 0.8 GHz to 12 GHz 11 dBi Gain, SMA Female Connector PEWAN1163](#)



Broadband Horn Antenna, Dual Polarized 0.8 GHz to 12 GHz 11 dBi Gain, SMA Female Connector

Specialty Waveguide Antennas Technical Data Sheet

PEWAN1163

Broadband Horn Antenna, Dual Polarized 0.8 GHz to 12 GHz 11 dBi Gain, SMA Female Connector from Pasternack Enterprises has same day shipment for domestic and International orders. Our RF, microwave and millimeter wave products maintain a 99.4% availability and are part of the broadest selection in the industry.

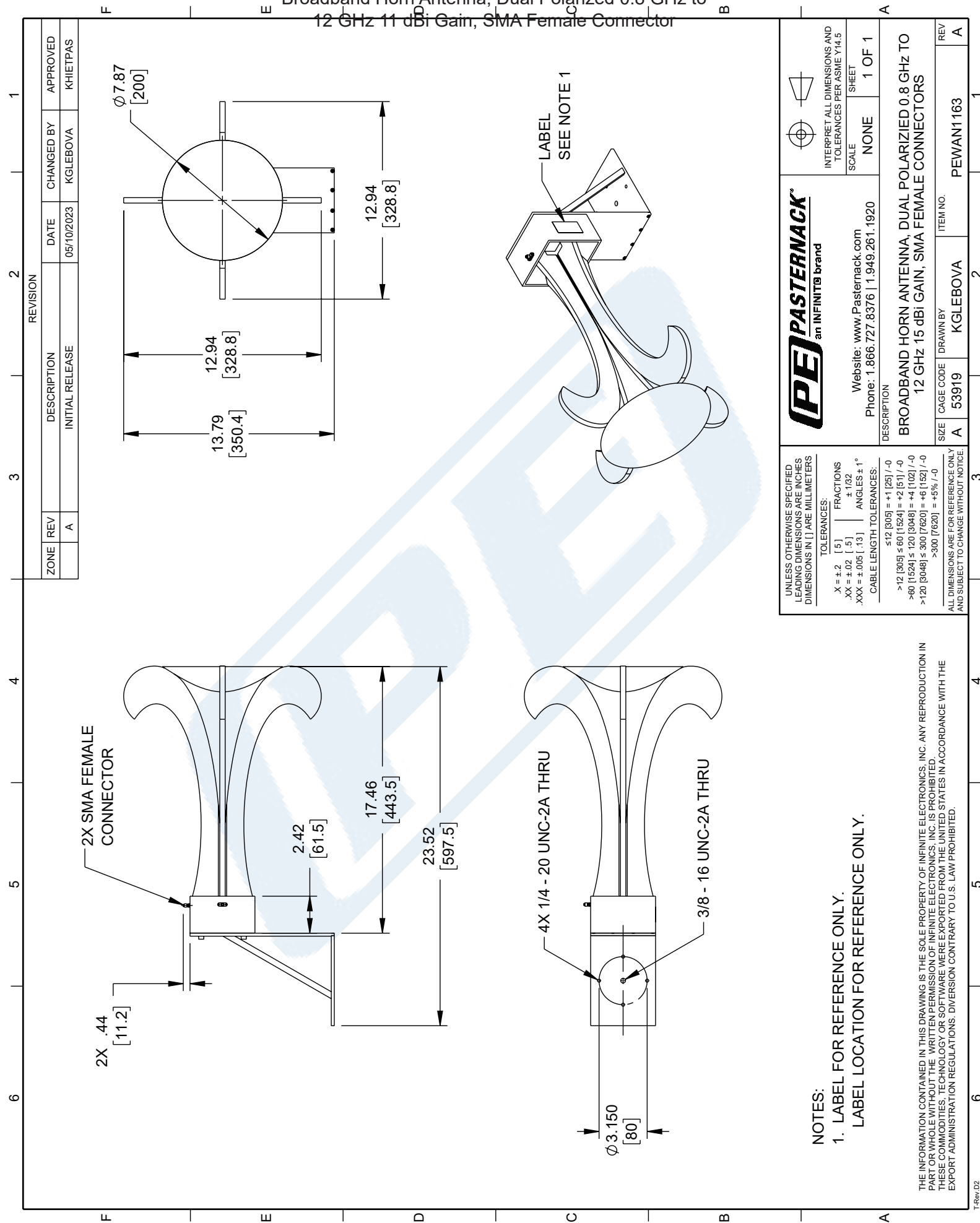
Click the following link (or enter part number in "SEARCH" on website) to obtain additional part information including price, inventory and certifications: [Broadband Horn Antenna, Dual Polarized 0.8 GHz to 12 GHz 11 dBi Gain, SMA Female Connector PEWAN1163](https://www.pasternack.com/waveguide-horn-antenna-12-ghz-11-dbi-sma-female-pewan1163-p.aspx)

URL: <https://www.pasternack.com/waveguide-horn-antenna-12-ghz-11-dbi-sma-female-pewan1163-p.aspx>

The information contained in this document is accurate to the best of our knowledge and representative of the part described herein. It may be necessary to make modifications to the part and/or the documentation of the part, in order to implement improvements. Pasternack reserves the right to make such changes as required. Unless otherwise stated, all specifications are nominal. Pasternack does not make any representation or warranty regarding the suitability of the part described herein for any particular purpose, and Pasternack does not assume any liability arising out of the use of any part or documentation.

PEWAN1163 CAD Drawing

Broadband Horn Antenna, Dual Polarized 0.8 GHz to 12 GHz 11 dBi Gain, SMA Female Connector



REVISION

ZONE	REV	DESCRIPTION	DATE	CHANGED BY	APPROVED
	A	INITIAL RELEASE	05/10/2023	KGLEBOVA	KHIETPAS

UNLESS OTHERWISE SPECIFIED LEADING DIMENSIONS ARE INCHES DIMENSIONS IN [] ARE MILLIMETERS

TOLERANCES:
 .X = ±.2 [5] | FRACTIONS ±.1/32
 .XX = ±.02 [.5] | ±.1/32
 .XXX = ±.005 [.13] | ANGLES ± 1°

CABLE LENGTH TOLERANCES:
 ≤12 [305] = +1 [25] / -0
 >12 [305] ≤ 60 [1524] = +2 [51] / -0
 >60 [1524] ≤ 120 [3048] = +4 [102] / -0
 >120 [3048] ≤ 300 [7620] = +6 [152] / -0
 >300 [7620] = +5% / -0

ALL DIMENSIONS ARE FOR REFERENCE ONLY AND SUBJECT TO CHANGE WITHOUT NOTICE.



Website: www.Pasternack.com
 Phone: 1.866.727.8376 | 1.949.261.1920

DESCRIPTION
BROADBAND HORN ANTENNA, DUAL POLARIZED 0.8 GHz TO 12 GHz 15 dBi GAIN, SMA FEMALE CONNECTORS

SCALE NONE SHEET 1 OF 1

INTERPRET ALL DIMENSIONS AND TOLERANCES PER ASME Y14.5

NOTES:

1. LABEL FOR REFERENCE ONLY. LABEL LOCATION FOR REFERENCE ONLY.

THE INFORMATION CONTAINED IN THIS DRAWING IS THE SOLE PROPERTY OF INFINITE ELECTRONICS, INC. ANY REPRODUCTION IN PART OR WHOLE WITHOUT THE WRITTEN PERMISSION OF INFINITE ELECTRONICS, INC. IS PROHIBITED. THESE COMMODITIES, TECHNOLOGY OR SOFTWARE WERE EXPORTED FROM THE UNITED STATES IN ACCORDANCE WITH THE EXPORT ADMINISTRATION REGULATIONS. DIVERSION CONTRARY TO U.S. LAW PROHIBITED.